

RoHS Compliant

**SPECIFICATION :**

**1. Electrical Char.**

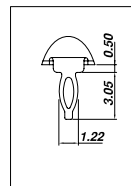
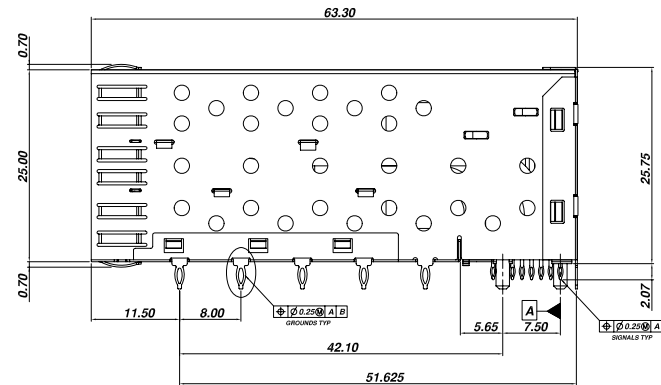
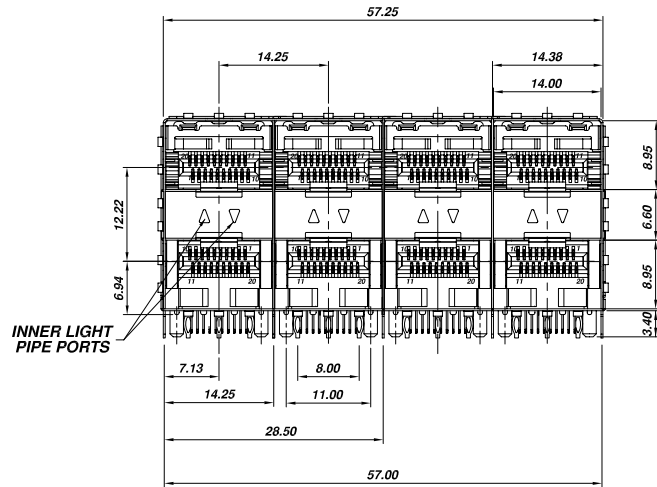
Low Level Contact Resistance :  
 $\Delta R$  10milli-Ohm Max. For Shield & Signal Contacts.  
 Withstanding Voltage : 300V AC Max.  
 Insulation Resistance :  $1 \times 10^5$  Ohm Min.  
 Rating Current : Signal Application Only.  
 Rating Voltage : 120V AC.

**2. Physical char.**

Connector Housing : LCP (UL 94V-0) Black Color,  
 Soldering Temperature:235°C for 5 Sec.  
 Moulded Inset : High Temperature Plastic (UL 94V-0) Black Color.  
 Contact Mating Area : 0.20mm Thickness Phosphor bronze  
 Gold Plating Over Nickel.  
 Contact Needle Eye : 0.20mm Thickness Phosphor bronze  
 Matte Tin Plating Over Nickel.  
 Cage : Copper Alloy, T=0.25mm.  
 Light Pipes : Polycarbonate. UL 94V-0, Clear Color.  
 Light Pipe Housing : PBT Glass Filled (UL 94V-0), Black Color.  
 Operation Temperature : - 40°C / +85°C  
 Storage Temperature : - 55°C / +105°C

**3. Mechanical Requirement:**

Durability : 100 Mating cycles Min.  
 Insertion & Extraction Force : 40N Max. & 11.5N Max.



**ASFP-SN24-XI**

Gold Plated	1 = 15u" 2 = 30u"
-------------	----------------------

**ALLSUN CORPORATION**  
 9FL,NO.292 SEC.7 CHENG TEH ROAD.TAIPEI TAIWAN.  
<http://www.allsun.com.tw>

TITLE

**SFP 2x4 Press Fit Connector**

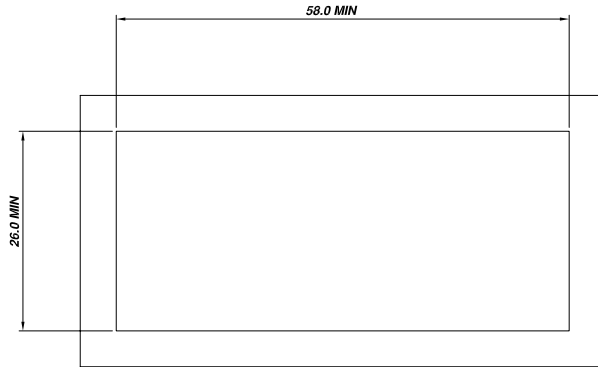
**ASFP-SN24-XI**

NOT SCALED DRAWING	TOLERANCE UNLESS OTHERWISE NOTICE	INCH	MM	DR.	DATE
 THIRD ANGLE PROJECTION	LINEAR	MM INCH	.00±0.01 .000±0.005 .0000±0.002	Steven CK'D	DEC-31 '13
	ANGLE +0° 30'	RADII	+0.45 -0.15	Johnn APP'D	DEC-31 '13
MM INCH				Billy	DEC-31 '13

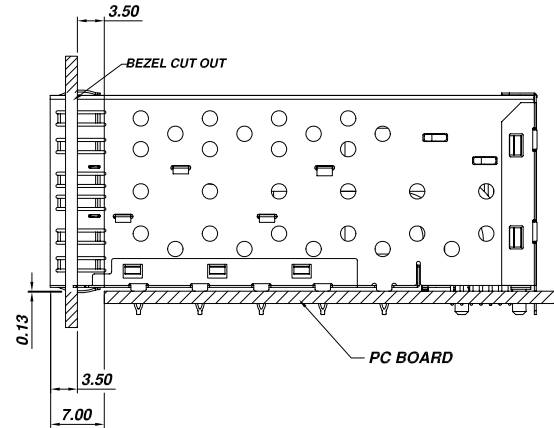
DWG. NO.

**ASFP0A20-1**

RoHS Compliant



BEZEL CUT-OUT CENTER SPACING DETAIL  
BEZEL THICKNESS:0.8-2.6



ALLSUN CORPORATION  
9FL,NO.292 SEC.7 CHENG TEH ROAD.TAIPEI TAIWAN.  
<http://www.allsun.com.tw>

TITLE

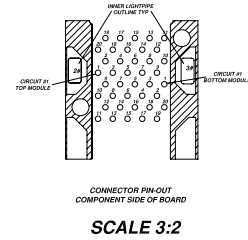
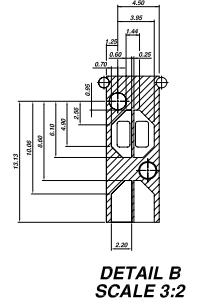
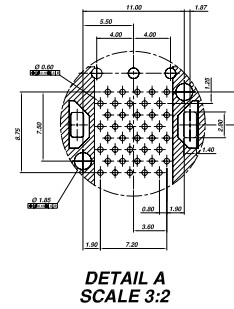
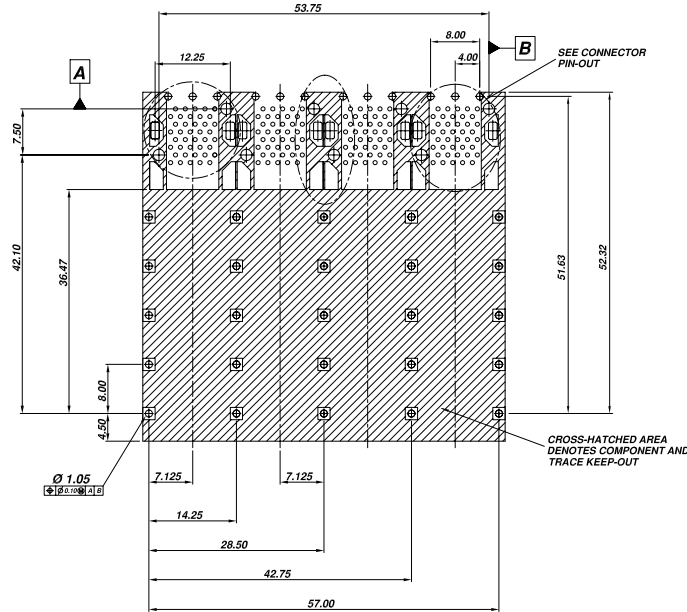
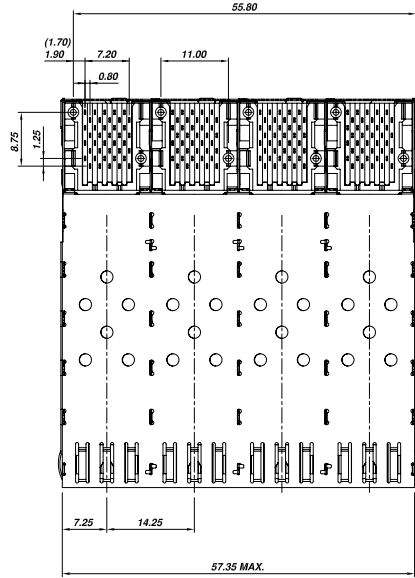
SFP 2x4 Press Fit Connector

**ASFP-SN24-XI**

NOT SCALED DRAWING	TOLERANCE UNLESS OTHERWISE NOTICE	INCH	MM	DR.	DATE
 THIRD ANGLE PROJECTION	LINEAR	$\frac{MM}{INCH}$	.00±0.01 .000±0.005 .0000±0.002	Steven CK'D	DEC-31 '13
	ANGLE +0° 30'	RADII	+0.45 -0.15	Johnn APP'D	DEC-31 '13
$\frac{MM}{INCH}$				Billy	DEC-31 '13

DWG. NO.

ASFP0A20-1



**ALLSUN CORPORATION**  
 9FL, NO.292 SEC.7 CHENG TEH ROAD, TAIPEI TAIWAN.  
<http://www.allsun.com.tw>


**TITLE**  
**SFP 2x4 Press Fit Connector**

**ASFP-SN24-XI**

**DWG. NO.**

**ASFP0A20-1**

3 of 3

NOT SCALED DRAWING  THIRD ANGLE PROJECTION	TOLERANCE UNLESS OTHERWISE NOTICE		<b>INCH</b>	<b>MM</b>	<i>DR. Steven</i>	<b>DATE</b> DEC-31 '13
		<b>LINEAR</b>	<b>MM INCH</b>	<b>.00±0.01 .000±0.005 .0000±0.002</b>	<b>.00±0.25 .000±0.13 .0000±0.05</b>	<i>CK'D Johnn</i>
		<b>ANGLE +0° 30'</b>	<b>RADII</b>	<b>+0.45 -0.15</b>	<i>APP'D Billy</i>	<b>DATE</b> DEC-31 '13